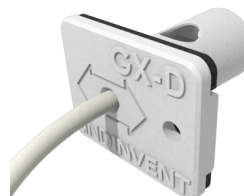


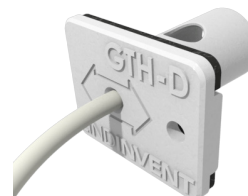
# GX-D MULTISENSOR [DUCT] GTH-D MULTISENSOR [DUCT]

### INTRODUCTION

GX-D is a sensor unit for installation in a duct, intended for measuring temperature, humidity and carbon dioxide content. GTH-D is identical to GX-D but lacks the carbon dioxide sensor. Wiring is included.



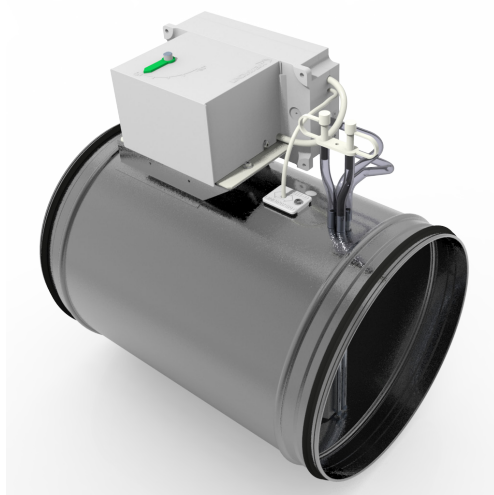
Multisensor GX-D.



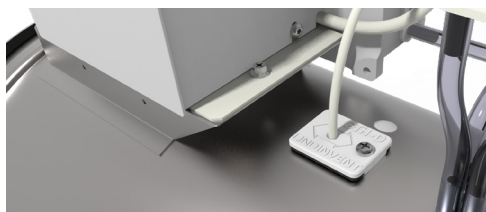
Multisensor GTH-D.

### APPLICATION

The sensor unit enables the smooth, simultaneous installation of multiple sensors in a duct. The unit can be delivered pre-assembled with one of Lindinvent's circular smart dampers or ordered separately with cabling for duct installation.



Multi-sensor GTH-D (GX-D) pre-mounted on airflow control unit DCV-BLb.



Detail: Multi-sensor GTH-D (GX-D) on airflow control unit DCV-BLb.

### TECHNICAL SPECIFICATIONS

#### Temperatur sensor

Measuring range: 0 to 65 °C  
Measuring accuracy:  $\pm 0.5$  K

#### Humidity sensor

Measuring range: 0-100 %RH  
Measuring accuracy:  $\pm 5$  %RH

#### Carbon dioxide sensor (only GX-D)

Measuring range: 400 - 10 000 ppm  
**Accuracy:**  $\pm (30 \text{ ppm} + 3\%)$  with background calibration to 400 ppm

#### General

Material  
Housing: PA2200  
Seal: EPDM  
Cable: PVC (without added halogenating flame retardants) with 4-pin plug in PA  
IP-class: IP20

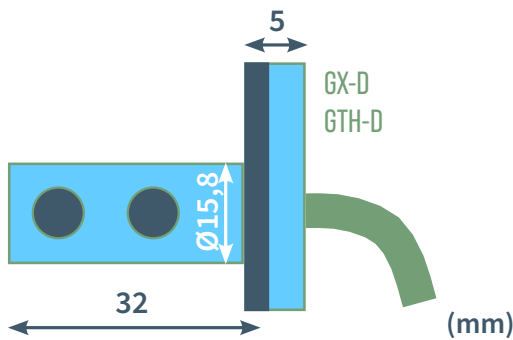
#### Electrical system

Power supply: 5 VDC  
Average power consumption:  $<0.15$  VA  
CE marking: Complies with EMC and Low Voltage Directive.

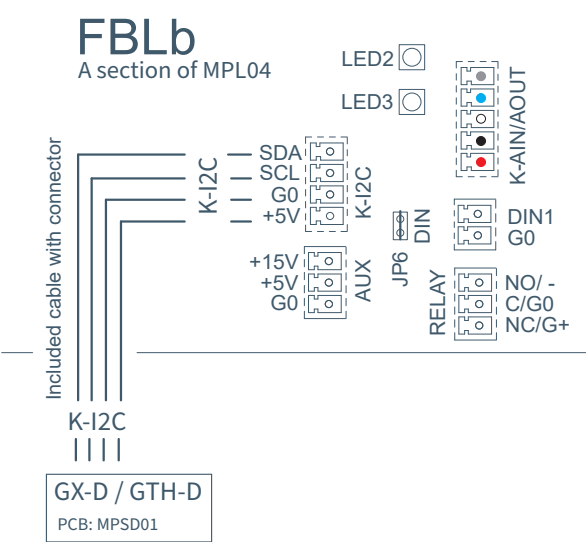
INSTALLATION

A Ø16 mm hole is drilled in the channel for the insertion tube. The total depth of the insertion is 32 mm. The upper part has a screw hole for attachment with a sheet-metal screw. The sensor unit communicates via I2C.

DIMENSIONS



CONNECTION TO CONTROLLER FBLb



A section of the FBLb external connection diagram showing the I2C connection for GX-D and GTH-D.

ADDITIONAL PRODUCT DOCUMENTATION

Documents are available at [www.lindinvent.com](http://www.lindinvent.com)

| Document                          | Comment   |
|-----------------------------------|---|
| Installation Instruction          | See instructions here in the product description for GX-D and GTH-D.  |
| Commissioning Instructions        | See commissioning instructions for DCV-BLb/FBLb.  |
| Maintenance Instructions          | Considered maintenance-free.  |
| External Connection Diagram       | Shows wiring connections.   |
| Environmental Product Declaration | For assessment by the Bygghälsöversyn in Sweden.  |
| AMA Text                          | Search via AMA code UBB for temperature sensors. See the relevant control unit and section for accessories. |