

## GO-C EXTERNAL PRESENCE SENSOR

### INTRODUCTION

The GO-C is an external presence sensor designed for ceiling mounting. This sensor detects changes in infrared radiation due to the movement of a person (or object). Lindinvent's climate control regulators are equipped with connections for presence sensors.

The sensor is used, for example, alongside the presence sensor in active supply units when an extended detection area is needed.



Ex-  
ter-

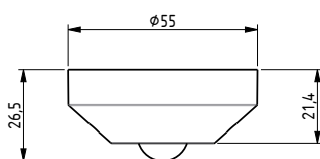
### APPLICATIONS

Detected presence or absence of presence is used for smart adaptation of operating modes. The goal is to maintain a desired room climate while optimizing energy use.

Examples of applications include:

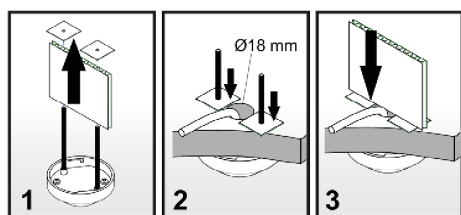
- Styra luftmängder, tilläggskylla eller värme
- Belysningsstyrning
- Motorstyrd solavskärmning
- Smart-plugs

### DIMENSIONS (MM)



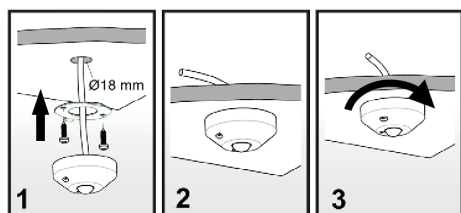
### CEILING MOUNTING

The sensor is intended for mounting in suspended ceilings or directly on ceiling beams as illustrated below. Mounting fixtures are included with the sensor upon delivery.



*Mounting GO-C in Suspended Ceiling Panels: Fastening plates (2+1) are removed from both pins. The cable is routed*

*through a hole in the ceiling panel with a maximum diameter of 18 mm. The pins are pushed through the panel, and the GO-C is secured to the*



*Mounting GO-C on Ceiling Beams: Secured using a mounting ring and bayonet fitting.*

### TECHNICAL SPECIFICATIONS

#### General

##### Presence Detector

PIR: Passive IR detector, motion, with 208 zones  
Detection Area: Circular with a radius of 5.1 m when mounted at a height of 2.4 m  
Field of View:  $\pm 65$  degrees from the vertical  
Detection Zones: See illustration for resolution  
Dimensions: See adjacent illustration

##### Material

Casing: PP  
Circuit Board: FR4  
Cabling: Polyolefin, Halogen-free (EN 60754-1/2, IEC 60754-2)  
Weight with 3 meters of Cable: 100 g

##### Color

Casing: RAL9003

##### Miscellaneous

Fixtures for mounting in suspended ceilings/soft acoustic panels or for mounting on ceiling beams are included. Specify upon ordering.

#### Electrical System

##### Power Supply

5 V

##### Power Consumption

<0,1 VA

##### CE-Marking

Complies with EMC and Low Voltage Directives.

##### IP-Rating

Enclosure rated IP20.

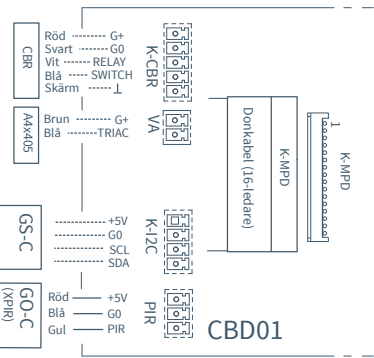
#### Input and Output Signals

##### Output Signals

1 digital signal, 0 or 5VDC (Presence).

Kopplingsbox CBD till ISQ-160, ISQ-200, ISQ-F, ISQ-V

CBR = Belysningsstyrningsbox  
A4x405 = Ventilställdon, 24VAC (On/Off)  
GS-C = Ljudnivågivare  
GO-C, XPIR = Närvarogivare, 5VDC  
ISQ-160/-200/-F = Aktiv taktilluftsdon  
ISQ-V = Aktivt väggmonterat tilluftsdon

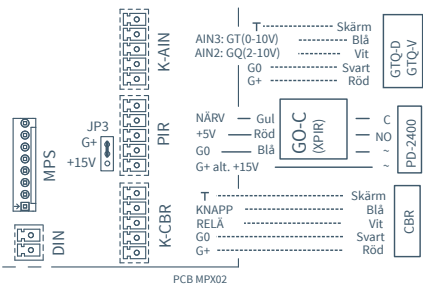


Section of the circuit board

Sektion från förbindningsschemat till RCXb/ LCXb/ BCXb

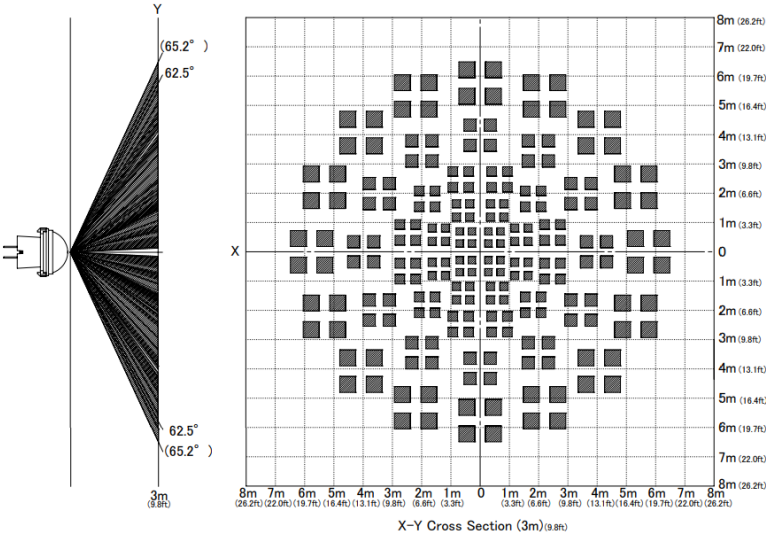
GTQ-D/-V = Temp och koldioxidgivare  
GO-C, XPIR = Närvarogivare, 5VDC  
CBR = Belysningsstyrningsbox  
PD-2400 = Närvarogivare, 24VAC

RCXb = Rums klimatsregulator (DCV-RCb)  
LCXb = Lab klimatsregulator (DCV-LCb)  
BCXb = Klimatbaffelregulator



Section of

DETECTION ZONES & FIELD OF VIEW



Detection zones and field of view for GO-C.

SUPPLEMENTARY PRODUCT DOCUMENTATION

Documents are available at [www.lindinvent.com](http://www.lindinvent.com)

Documentation	Kommentar
Installation Instructions	Refer to this product description for GO-C. Shows hole drilling and ceiling mounting.
Commissioning Instructions	See commissioning instructions for the control unit to which the presence sensor is connected.
Maintenance Instructions	Considered maintenance-free.
External Connection Diagram	Shows how equipment connects to the active supply unit via the CBD junction box and connection to other room climate regulators.
Environmental Product Declaration	For assessment by the Byggarbetsdömdningen in Sweden.
AMA-text	New version coming soon.