

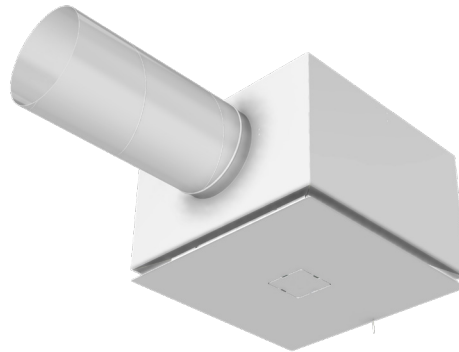
Commissioning instructions

Flow Distribution

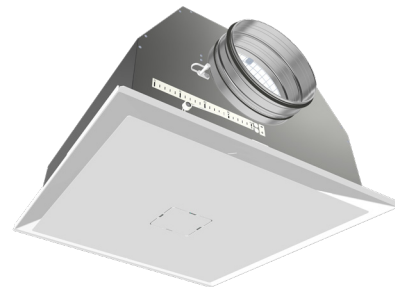
The supply air flow should normally be evenly distributed among the reactive terminals connected to the same main duct. If the flow distribution is uneven among the terminals due to asymmetry, the flow distribution between the terminals may need to be adjusted.

How to do it?

The flow valve in the terminal is adjusted when the terminal is mounted. When the pressure is equal in the terminals, the total flow is distributed equally. The terminals are equipped with a nipple for pressure measurement. The pressure in the terminal is adjusted by pulling the string to open or close the flow valve.



The reactive supply air terminal ISQ-M for installation in suspended ceilings.



The reactive supply air terminal ISQ-FM for visible installation.

Procedure for Air Flow Distribution

- 4 terminals
 - maximum flow 400 l/s
1. Set the air flow in the main duct to 400 l/s.
 2. Connect hoses to the pressure nipples on each terminal and measure and record the pressure.
 3. Adjust the flow valve opening on the terminals with the lowest pressure until the same pressure is achieved in all terminals.

Done!

